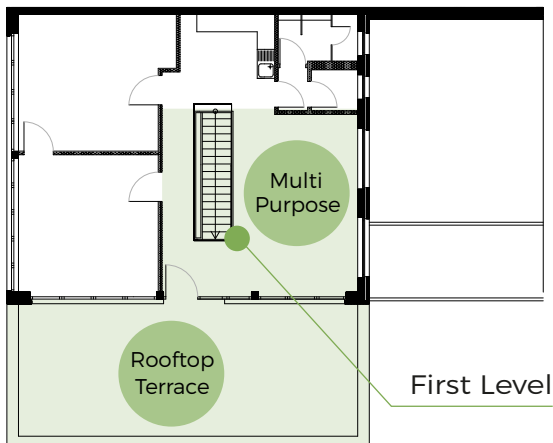


First Level

- FGD Observation (36sqm)
- Focus Group Discussion (31sqm)
- Multi Purpose / Team Catering (30sqm)
- Rooftop Terrace (30sqm)

Ground Level

- Bar / Waiting (15sqm)
- Reception (30sqm)
- Meeting 1 (36sqm)
- Meeting 2 (21sqm)



- Area indoors: 800sqm
 - Area outdoors: 384sqm (weather protected)
 - Main Stage: 430sqm
 - Aux Stage: 144sqm
 - Gate 1: 5,40 x 4,25m (WxH)
 - Gate 2: 5,30 x 4,25m (WxH)
-  Available  Not Available